

Hear ye, hear ye,

Get chur NEWS OF THE DAY, only 1 cent

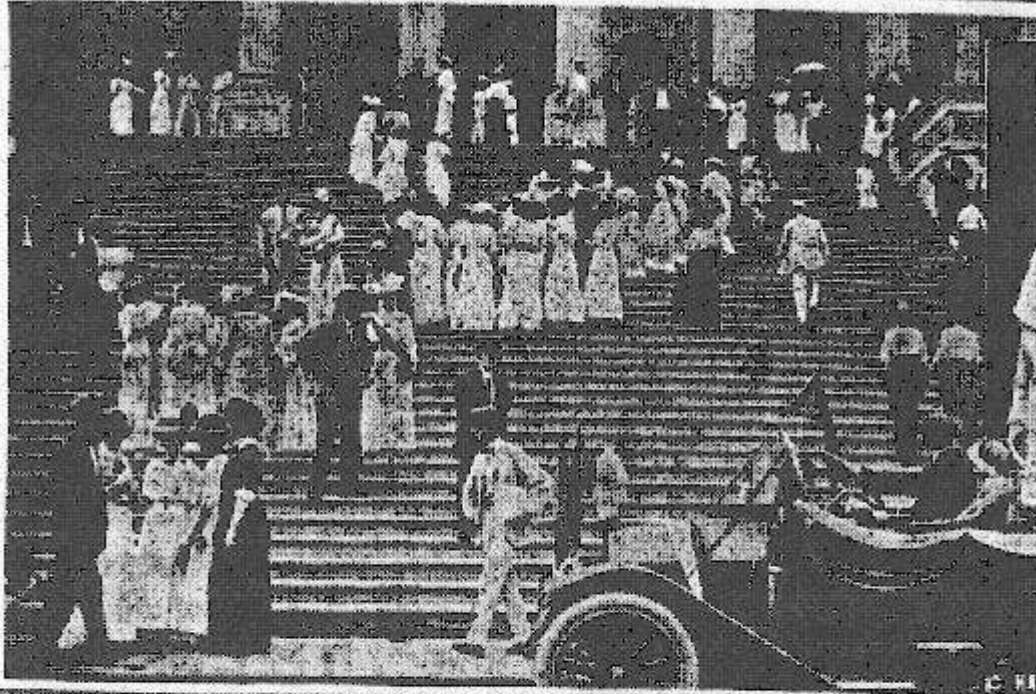
May 1913 "*Lake Worth Herald*"

WOMAN'S SUFFRAGE BILL DEFEATED.

The House of the Florida legislature evidently does not give the voters of the State credit for sufficient intelligence to vote right on the woman's suffrage question. Women have labored earnestly at the State capitol to have the matter submitted to the voters, but the House refused that request. Now the women are concentrating their efforts on the State Senate, in the hope of prevailing on that body to pass a bill allowing the voters of the State to settle the question at the polls at the next the question at the polls at the next general election in the fall of 1914. The efforts of the women will eventually be successful. Such efforts always are. The truth is on the side of the women and they cannot be permanently defeated no matter what combination may be arrayed against them. (verbatim)

Aug 4, 1913 "*Lake Worth Herald*"

Miss Elsie De Wolfe was defending in New York the actions of the militant English suffragettes. "If the men treated us over here," said Miss De Wolfe, "as they are treating the suffragettes in England, then we'd adopt militancy, too." "But," said a banker, "look at the English suffragettes' latest move. It's abominable. They're poisoning dogs. To poison a dog—is there any rhyme or reason in that?" Miss De Wolfe laughed. "I suppose the English suffragettes,** she said, "are poisoning dogs because the dog is the friend of man."



Since the recent successful invasion of Washington by the suffragists, the National Co Voters has been carrying on a vigorous street speaking campaign in that city, and its workers capitol every day. Groups of them are here seen on the steps of the capitol, and the inset is James Leeds Laidlaw of New York, one of their leaders.

GENERAL INFORMATION – I w herald 1913

Lumber, average \$24.00 per thousand cement, \$2.25 per barrel cement plaster, \$18.00 per ton brick, \$12.00 to \$14.00 per thousand shingles, \$4.00 to \$5.00 per thousand. Railroad mileage 3 cents. Horses \$100.00 to \$200.00 per head native ponies \$50.00 to \$100.00. Hardware about normal with other sections. Farming tools about earners other sections. Farming tools about earners other sections domestic expenses, the average with other sections, with the exception of fuel for heating, which is almost nothing. Servants, colored, available for \$3.00 to \$6.00 per week. Grapefruit and orange trees, nursery stock, 30c to 50c each. Plant about 60 to acre or twenty-seven apart. Cost of planting citrus fruit trees about \$12.00 per acre. About four to six years from planting to profitable bearing. Cost of preparing, planting and harvesting one acre tomatoes, including fertilizer, about \$90.00. Takes about four and a half weeks to start plants; takes seven to ten weeks to mature crops

We have a fine Club House, school house, moving picture show, a bank, two lumber yards, 1913 *Lake Worth Herald*

The new, Bijou theatre building • is nearing completion. The building is of re-inforced concrete^ and bias a seating capacity of 600. Aug 28, 1913
Lake Worth Herald

SIGN IS MISPLACED One of the West Palm Beach hotels received some rather peculiar advertising last week. Improvements were being made in the place, and it became necessary to take down a sign reading "Hotel Annex." By a coincidence this sign was placed in front of an undertaking establishment, and passers by were not slow to remark that they did not care to get a room in the annex. June 12 *Lake Worth Herald*

April 24, 1913 – *Lake Worth Herald*

yet if we compel the legitimate rum-sellers to go out of the business, we will simply invite a whole host of men to come forward and fill in the breach whose mainspring will not only be the love of money, but the desire to obtain what they consider will be justice or a right to liberty that they are seeking to take from them.

Comments/questions contact:

Marion B. Cone

Vice President

Ladym2000@aol.com

